

LOUD
OF SWEDEN

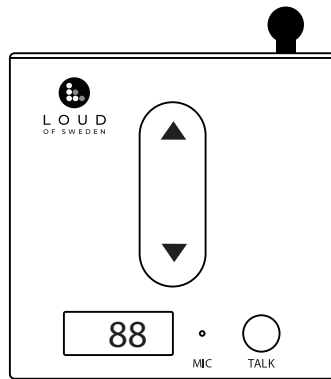
Wireless system manual



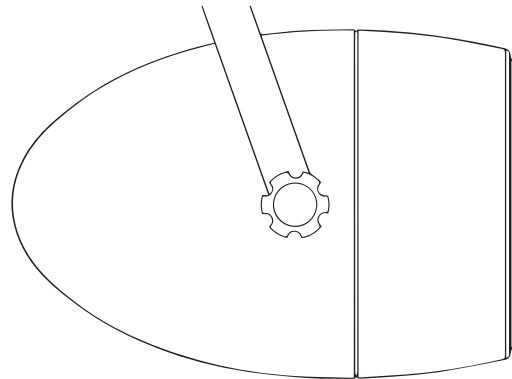


Products

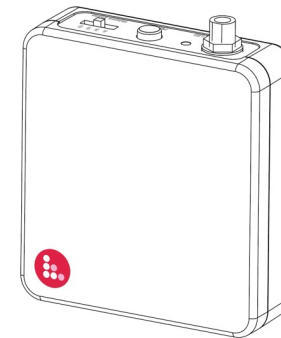
Base unit B2 & B2D



Satellite speaker S2



Receiver Rx2



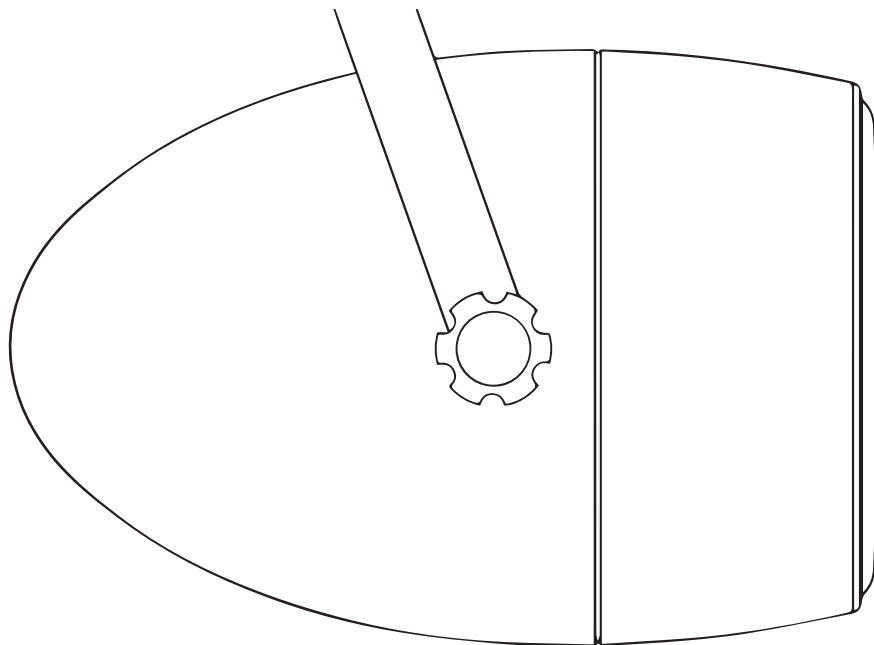


1,9 Ghz DECT





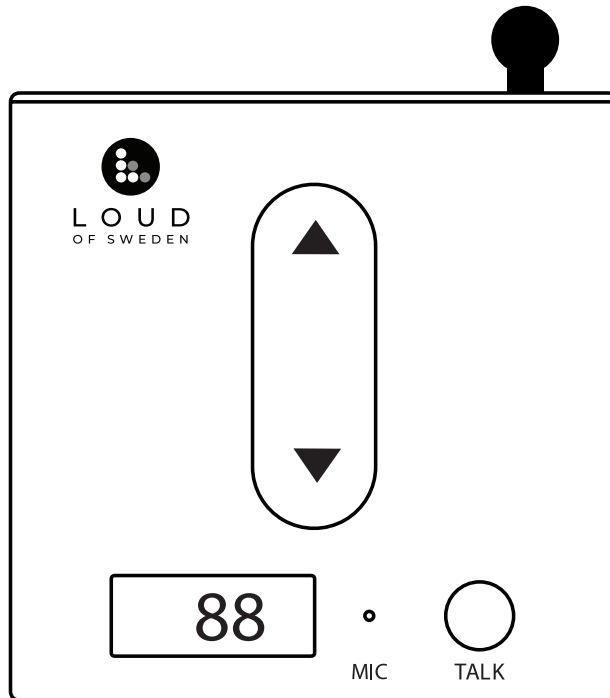
Product S2



45-18 000 Hz wireless
45-20 000 Hz wired
Wireless Local Gateway 2.0
Coaxial neodymium driver with 0.75" soft dome tweeter
HIFI graded
4 individual volume zones, A, B, C, D
Pairing system
In Wireless or wired 3,5mm aux unbalanced
Out wired 3,5mm aux unbalanced
Mains voltage 110-240V AC
Power consumption, maximum 22W
Operating wireless frequency 1,9 Ghz DECT
Weight 1525g
Width 160mm
Depth 220 mm
Height 160mm
Available colours white, black, grey



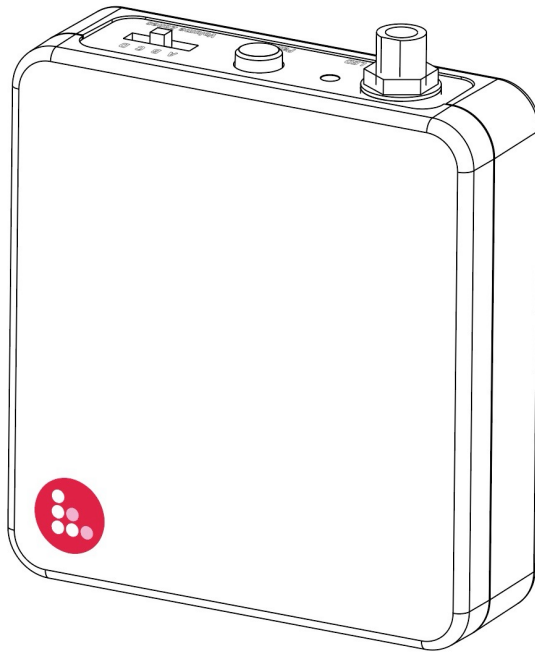
Product B2 & B2D



Transmitter & volume control
20-18 000 Hz wireless
Wireless Local Gateway 2.0
4 individual volume zones, A, B, C, D
Announcement function
Pairing system
In unbalanced 3,5mm aux
RJ 45 Dante 2 ch (B2D)
Mains voltage USB-C, 5V 1A
PoE (B2D)
Operating range > 350m in line of sight
Latency 16 ms
Power consumption, maximum 2,4W
Operating wireless frequency 1,9 Ghz DECT
Weight 227g
Width 110 mm
Depth 26 mm
Height 110 mm
Available colour white



Product Rx2



Receiver
20-18 000 Hz wireless
Wireless Local Gateway 2.0
4 individual volume zones, A, B, C, D
Pairing system
Out unbalanced 3,5mm aux
Out Optical 3,5mm (adapter to Toslink)
Mains voltage USB-C, 5V 1A
Operating range > 350m in line of sight
Latency 16 ms
Power consumption, maximum 2,4W
Operating wireless frequency 1,9 Ghz DECT
Weight 65g
Width 63 mm
Depth 63 mm
Hight 20 mm
Available colour black
Compatible with any active speaker or amplifier
Made to match SS2 & SS3



Get started

1. Connect B2 transmitter to AC outlet 100–240 V
2. Connect audio cable 3,5 mm Aux to any analogue source and make sure it supplies a good signal to B2.
If you use Dante make sure you see a signal on the Dante controller software.
3. Connect S2 speaker to AC 100-240 V and wait for it to power up (white flashing and white solid for stand by).
4. Press "PAIR" button on the B2 transmitter for five seconds to set it in to pairing mode.
The blue LED starts flashing.
5. Press the "PAIR" button on the on the S2 speaker for five seconds to set it in to pairing mode.
The blue LED starts flashing (one S2 speaker or Rx2 receiver at a time).
6. When the LED is solid blue on the speaker the pairing is completed and you can pair next speaker or Rx2.
7. You can do the same pairing with the Rx2 receiver.
8. Please allow the units to be paired to be properly powered up, and only pair one unit at a time.
9. Music will not be playing until pairing mode is finished on the B2.
10. You get 10 minutes to pair each device, so once speaker 1 has been paired, the time cycle resets and you get another 10 minutes for the next speaker.
11. After pairing all speakers, press and hold the pairing button on the B2 transmitter for ten seconds to close the pairing mode.
12. Once paired and music is supplied to B2 it will indicate signal by the LED turning green if your music is playing,
and on all paired speakers or receivers there will be a green LED.
13. The system will not let any other system in to the paired family once pairing mode has been closed.
14. There can be more than 400 systems operating in the same space.
15. If you connect to a S2 speaker via signal cable in to the 3,5 mm Aux, the speaker will automatically switch to wired mode
16. The volume control nob on the S2 speaker is only active in wired mode.

Information videos may help you on our website <https://www.loudofsweden.com/support/videos/>



LED indicator

	B2	S2	RX2
Powering up	White flashing	White flashing	White flashing
System initiated	White solid	White solid	White solid
Pairing	Blue flashing	Blue flashing	Blue flashing
Pairing completed	Blue solid	Blue solid	Blue solid
Paired no audio signal	Purple solid	Purple solid	Purple solid
Paired with audio signal	Green solid	Green solid	Green solid
factory Reset	Yellow light flashing	Yellow light flashing	Yellow light flashing
Audio source	MIC:red light Line in:green light Dante :white light		
Software updating	Red flashing	Red flashing	Red flashing
Stand by	Red solid	Red solid	Red solid

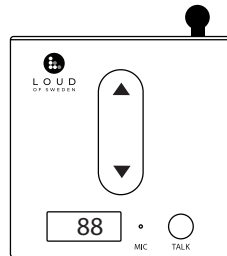


Software update

1. Download the software from the product website
2. Place the file on a USB A 2.0 drive (only the one file must be on the drive)
3. Plug in the USB A drive
4. Power up the unit and a flashing red will indicate updating in progress.
5. Red solid LED means the update is finished.
6. Unplug the power
7. Unplug the USB A drive
8. Plug in power

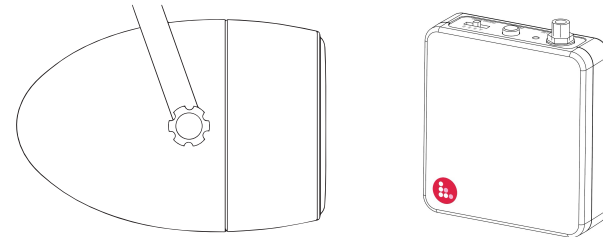
Factory reset

Base unit B2 & B2D



1. Press and hold pair and volume down for ten seconds
2. Yellow flashing LCD
3. Solid white meaning factory reset finished after reboot

Satellite speaker S2 & Receiver Rx2



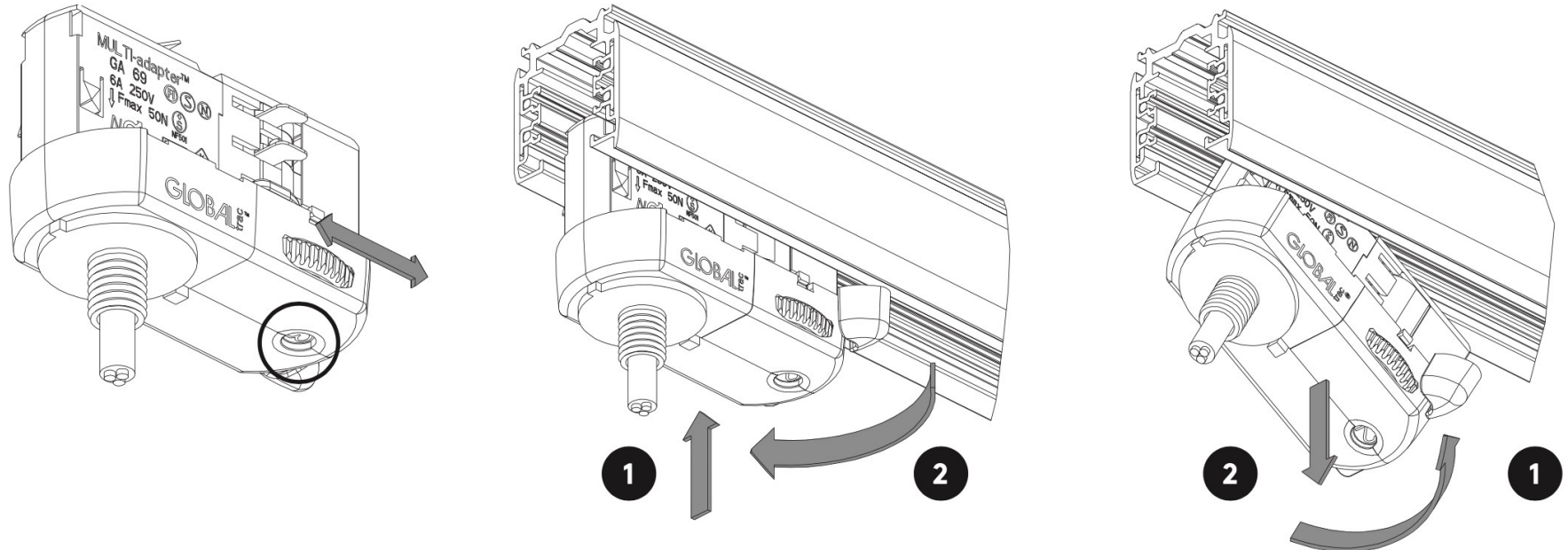
1. Press and hold pair for ten seconds
2. Yellow flashing LCD
3. Solid white meaning factory reset finished after reboot



Volume zones

1. Set the hardware switch on the S2 speaker or Rx2 receiver on a selected zone A, B, C, D
2. On the bottom or back side of the B2 transmitter press and hold for 5 seconds the selected zone and use the volume button on the front to adjust.
3. You can select +9 to -9 per zone
4. The S2 and Rx2 are set to be on 0 from the factory.
5. -9 means no sound
6. After adjusting the volume, the B2 will automatically go back to master volume
7. If you have different volumes selected for different zones, the master volume will increase or decrease all volume zones but the selected zones remains differentiated

Power track adapter



1. Select power phase (this is depending on the electric instalment)
2. Lock in to place (make sure it's in the correct position for warranty to apply)
3. Unlock to remove
4. This is the default installation for the S2 speaker. It can be done on any hight or angle.
5. If power tracks are not available please use our mount CWM1



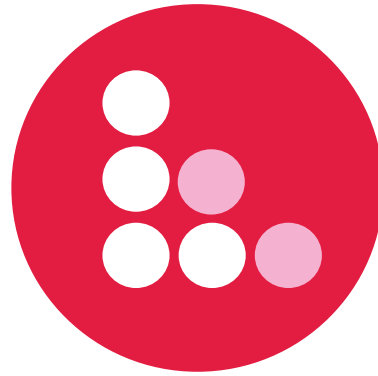
Safety

1. Read all instructions
2. Follow all instructions
3. If unsure of power connections ask the electrician before installing
4. Do not use outdoors or near water
5. Operating temperature (°C) 5–40, Humidity (%) no condensation 30–90
6. Do not block any ventilating openings
7. Minimum ventilation distance 10 cm
8. Do not install near heat source or items radiating heat
9. Do not instal inside metal casing
10. Protect power cords from wear and tare
11. Only use the products as intended by the manufacturer
12. If not in use for a long period of time, please unplug.
13. All service must be performed by qualified personnel
14. The power cord for this product is intended for indoor use only.



Videos

You can see information videos that may help you on our support website
<https://www.loudofsweden.com/support/videos/>



L O U D
O F S W E D E N

Simply sound..

